

**1 Our Products**

*We can create a tie, bow tie, or scarf with your colors for a unique look*

**2 Color Matching**

*Have a particular color to match to? Check here for details*

**3 Style Guide**

*See how to pair your favorite colors and patterns for your next order*

**9 Order Guide and Information**

*Pricing, sizing information, turnaround times, and materials*

**10 Frequently Asked Questions**

*More questions? Call or email us.*

**11 Pattern Guide**

*Pages of patterns to choose. From stripes to florals*





## ALL PRODUCTS



Skinny width  
2" Across tip

Knotty width  
2.75" Across tip

Classic width  
3.5" Across tip

### Necktie

1-4 \$45 ea. | 5-9 \$41 ea. | 10-24 \$38 ea.

Poly twill

*Longer lengths & Children's sizing available*



### Bow Tie

1-4 \$45 ea. | 5-9 \$41 ea. | 10-24 \$38 ea.

Poly twill

*Fits neck up to 18" Extended lengths available*

## Hand Made in Denver

All of our products are handmade in Denver, Colorado with the highest regard for people and the environment. We custom print on recycled fabric in-house, so our everything we make is infinitely customizable. Bulk discounts for our ties, bow ties, and scarves are always available and there are no minimums!

### Pocket Square

\$15 ea. | Approx. 12" x 12"

Poly twill





Your text here  
Add A Date

**knotty**  
tie co.

## Get Personal

Your Knotty Tie Co. tie, bow tie, and scarf can include a custom tag message. Each message is \$5 to give a more personal touch.

We tied the knot! ♥  
Add A Date

**knotty**  
tie co.



## Color Matching

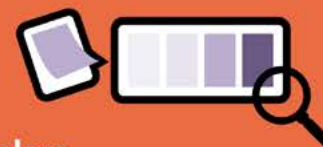
Order the Knotty Tie ColorMatch Chart to preview and verify colors before you place your order.



## Order the ColorMatch Chart

The Knotty Tie ColorMatch Chart is 560 colors across a range of hues and shades. If you're matching to other garments, you can use the ColorMatch Chart to find the closest match.

Order the chart at [knottytie.com/colormatch](http://knottytie.com/colormatch)



## Match to Bridal Colors

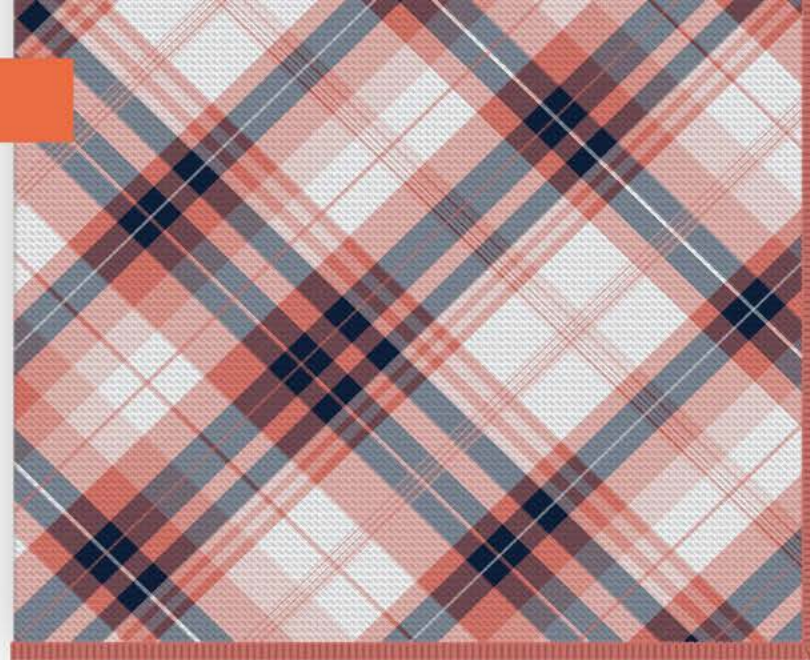
Use our bridal color matches to match to colors from David's Bridal and Azazie. We've tested these colors to get the best match possible. Verify with the ColorMatch Chart to see how they look on our fabric.



## Get Your Deposit Back

Part of the cost of the ColorMatch Chart is refundable when you return your color charts. Just use the included label to send it back when you're done.

## STYLE GUIDE



*Dawn, Thames, Blossom, & White combination*

### One Color, One Pattern, Many Looks

If there's a pattern you love, try changing around the colors.

Using different primary colors for each person is a simple way of distinguishing wearers from each other.

### Baskerville Pattern (#05827)





*Chow-Chow, Monkshood, Macadamia, Hermes, & Tarragon combination*

## Multiple Possibilities

Keep the same theme and colors for a coordinated look. You can match each tie to each personality and there's no additional cost.

- 1. Mesa** (#02531)
- 2. Ivy League** (#01207)
- 3. Herringbone** (#02501)
- 4. Clancy** (#02510)
- 5. Link** (#02521)





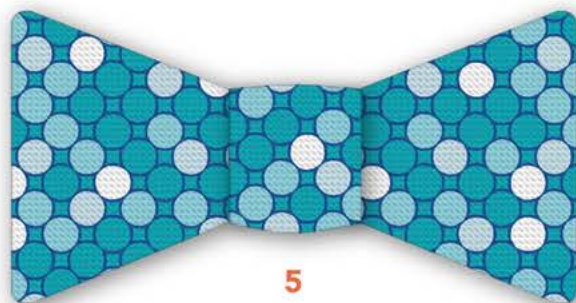
1



4



2



5



3



6



7



8



*Bubble, White, Caribbean, Cobalt & Aquamarine combination*

## Fun for the Rest, Subtle for the Guests

Need something fun for the wedding party, but something simple for the fathers in attendance? Try combining different types of patterns that each wearer will still wear after your ceremony.

**1. The Grid** (#02505)

**2. Hexagon Wild** (#02502)

**3. Lauf** (#02511)

**4. Elizabeth** (#01212)

**5. Syracuse** (#01206)

**6. Maze** (#02508)

**7. Kalamath** (#06010)

**8. Winthorpe** (#06005)

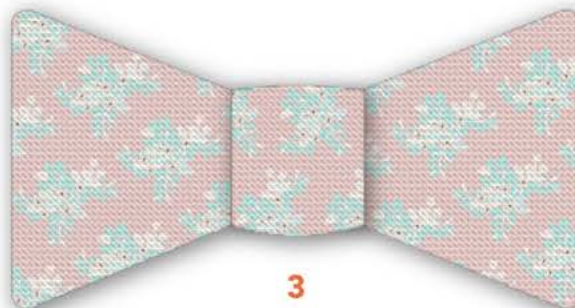




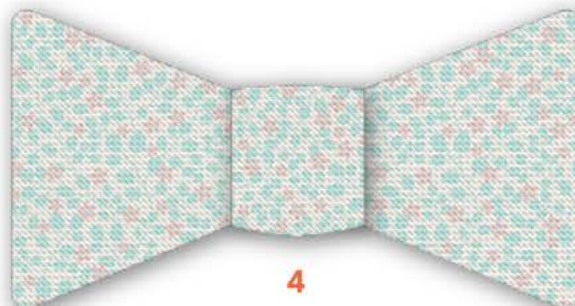
1



2



3



4



*Lace, Sand, Vanilla, Wooly Scarf, & Wisp combination*



5

## Rustic Touches

Create the perfect blend of rustic patterns, casual yet fun flair. Order ties and bow ties to create a coordinated look.

- 1. **Gone Plaid** (#05840)
- 2. **Botanical Tile** (#07128)
- 3. **Lemon Blossom** (#07107)
- 4. **Micro** (#07104)
- 5. **American** (#05839)





1



2



3



4



5



*Algae, Ivory, Kiwi, & Smoky Quartz combination*

## Something for the Ring Bearer

Give your ring security a special tie of his very own. Children's ties and bow ties come pre-tied with a Velcro closure for a safe, easy, and comfortable fit that is sure to impress.

1. **Manhattan** (#05812)
2. **Dinos** (#08003)
3. **Basketweave** (#02520)
4. **Deco Mites** (#02527)
5. **Deco Curves** (#02526)





1



2



3



*Magenta, High Tide, White, & Honeygold combination*

## Traditional with Your Colors

Your colors can be used in any of our patterns and customized to fit with the rest of your wedding theme. You can also change the look of the pocket squares for added contrast.

Don't Forget the Pocket Squares!



1. **Aurora** (#01211)
2. **Vegas** (#05826)
3. **Bruce** (#06017)





## Bulk Pricing

### Ties, Bow Ties, and all Scarf styles

|           |          |
|-----------|----------|
| 1 - 4     | \$45 ea. |
| 5 - 9     | \$41 ea. |
| 10 - 24   | \$38 ea. |
| 25 - 99   | \$30 ea. |
| 100 - 499 | \$25 ea. |
| 500+      | \$21 ea. |

### Shipping estimates available

Cost of shipping is determined by size of order, location, and expedite. Call or email us for more information.



## Turnaround Timelines

### Delivery times begin after your design is approved and purchased

|          |   |
|----------|---|
| Standard | 3 - 5 weeks <i>no guaranteed delivery date</i>              |
| 20 day   | Delivered in 20 calendar days                               |
| 15 day   | Delivered in 15 calendar days                               |
| 12 day   | Delivered in 12 calendar days                               |
| 7 day    | Delivered in 7 calendar days <i>subject to availability</i> |

### International Orders:

We can ship orders around the world. Orders arriving outside of the United States may be subject to additional taxes or fees upon arrival which Knotty Tie Co. is not responsible for covering.



## Sizing Information

### Neckties

Widths Available

| Classic         | Knotty         | Skinny        |
|-----------------|----------------|---------------|
| 3.5 in (8.9 cm) | 2.75 in (7 cm) | 2 in (5.1 cm) |

Lengths Available

| Standard      | Extra long    | Extra-extra long | Youth self-tie | Kid's & Baby Pre-tie <sup>‡</sup> |
|---------------|---------------|------------------|----------------|-----------------------------------|
| 58 in (1.5 m) | 62 in (1.6 m) | 66 in (1.7 m)    | 52 in (1.3 m)  | custom length                     |

### Bow Ties

| Adult Self-tie*                  | Kid's Pre-tie <sup>‡</sup> | Baby Pre-tie <sup>‡</sup> |
|----------------------------------|----------------------------|---------------------------|
| Fits 14 - 18 in (35.6 - 45.7 cm) | 3yrs and older             | 2yrs and younger          |

*\*Extended neck strap available at request*

### Scarves

| Infinity                  | Square                   | Rectangle               |
|---------------------------|--------------------------|-------------------------|
| Crepe de Chine            | Poly Chiffon             | Poly Chiffon            |
| 8 x 60 in (0.2 m x 1.5 m) | 28 x 28 in (0.7 x 0.7 m) | 24 x 72 in (0.6 x 1.8m) |

<sup>‡</sup>All children's and baby ties and bow ties come pre-tied with a Velcro neck strap



## F.A.Q'S



### **Do I have to pay anything to get started designing?**

Nope! There is no charge to start working with a designer. You only pay when you are ready to place order.



### **How are your garments made?**

We print designs onto fabric and then cut and sew each to your specifications by hand in Denver, CO.



### **Can I use my own images or design?**

You bet. You can upload to the form when starting a design or email them to our designers, by sending to [team@knottytie.com](mailto:team@knottytie.com), who will make sure everything is set up properly. Vectored images are preferred, and if you don't have those, then please send the highest resolution images you have available.

One note: we cannot work with trademarked or copy-written material without explicit written permission from the owner, so if you don't have rights to use it, ask the owner.

We won't be able to start your design until we have that permission.



### **How long does design usually take?**

From the time in which you submit to start a design, we can have a detailed estimate and initial design proof ready for you in 1-2 business days.



### **Metallics, Glitters, and Rhinestones**

We do not offer any metallic color options, but we can use a similar color on our polyester twill fabric.



### **How long does manufacturing and shipping usually take?**

From the time you place your order, our standard turnaround time is 3-5 weeks. There is no guaranteed delivery date if you choose this method. For those who need faster delivery or a guaranteed delivery date, we can expedite manufacturing and deliver in as little as 12 calendar days.

If you are a local and can pickup in Denver, we can sometimes make orders faster, so give us a call if this is the case.



### **How can we match colors?**

The best way is to exchange physical swatches. If you have one, you can send it to us, or we can print a range of colors for you to see. We can also match images online, but it might be less accurate. If you have a specific color you need, let the designer know and they'll work with you to get it right using the best option available.



### **Do you offer kids sizes?**

You know it. Ties and bow ties are available for kids too! Kids sizes can be pre-tied with velcro closures or self-tied style. We usually make self-tie versions for kids 10+ years of age, and recommend pre-tied, velcro adjustable versions that are easy to wear for kids less than 10 years old.



### **Can I personalize the tag on the tie or scarf?**

Absolutely! We can add your wedding date, names, or any other text image you would like. Please limit text to 20 characters and two lines. Images must be quite small to fit on the tag and your designer can proof imagery to best see how it will come out. Custom tags do incur a small fee



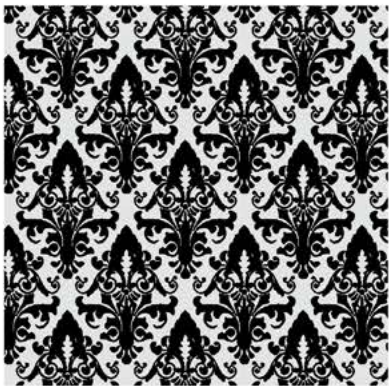


# *Pattern Guide*

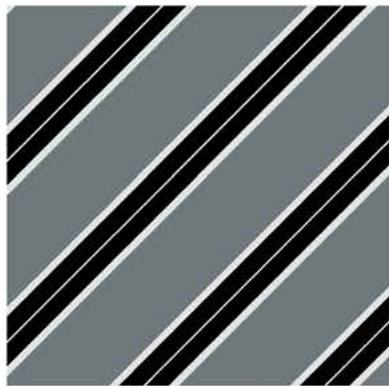
Whether it's a corporate gift, apparel for your school group, or gear for a special event, our designers can make your brand shine on our custom ties, bow ties, scarves, and pocket squares.



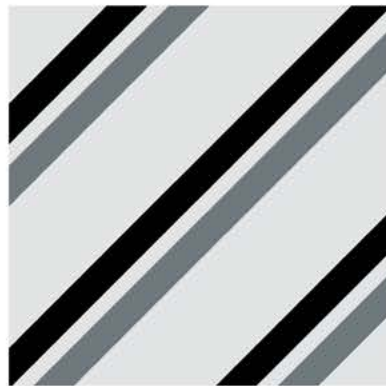




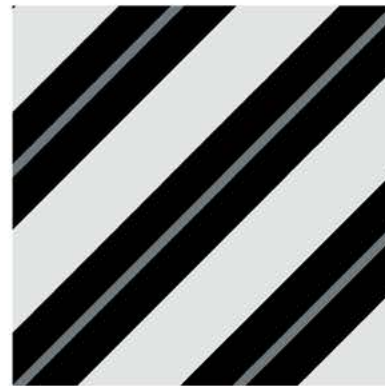
Regis  
03303



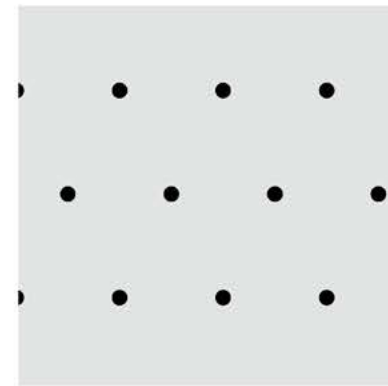
Kalamath  
06010



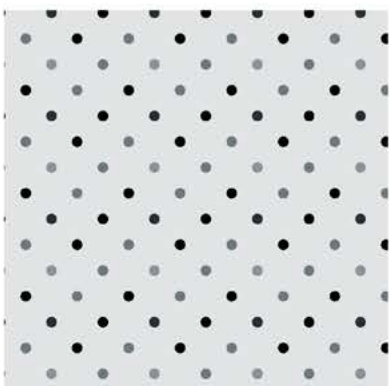
Brooklyn  
06008



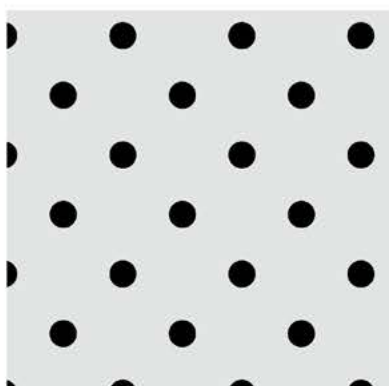
Winthorpe  
06005



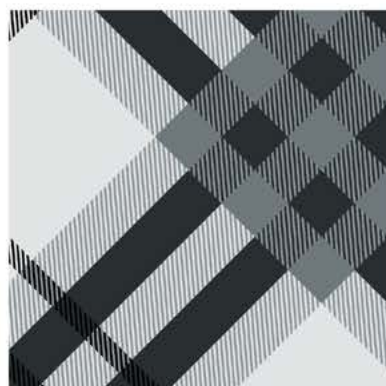
Denver  
01201



Aurora  
01211



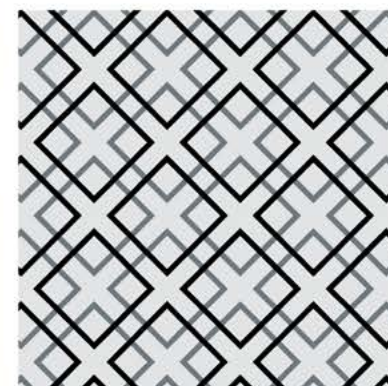
Franklin  
01208



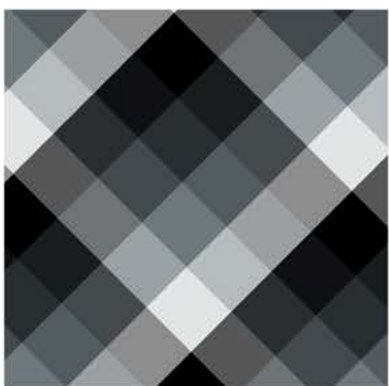
Cincy  
05836



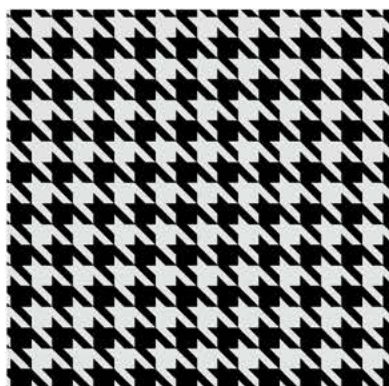
Argyle  
05838



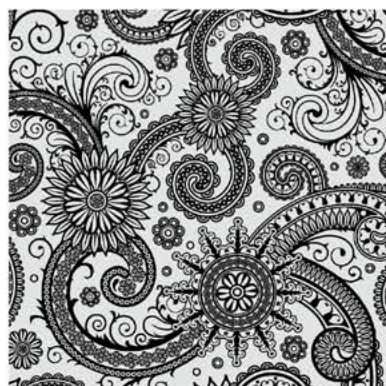
Mesa  
02531



Squared Away  
05831



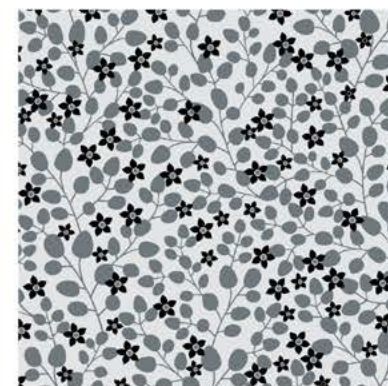
Houndstooth  
02517



Carleton  
04605

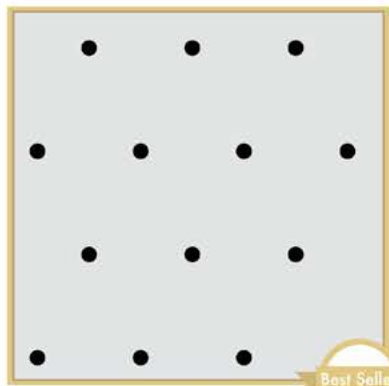


Sebastian  
04606

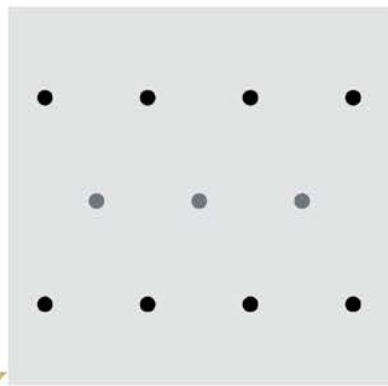


Micro  
07104

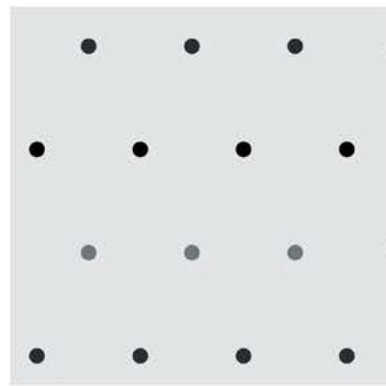




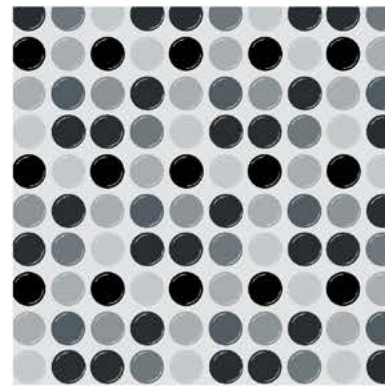
**DENVER (1)**  
01201



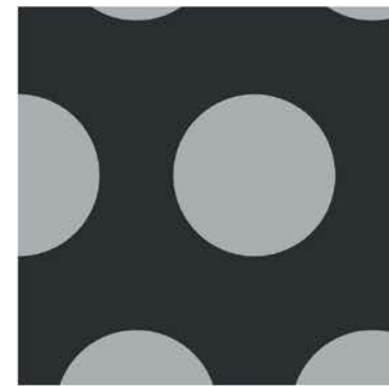
**DENVER (2)**  
01202



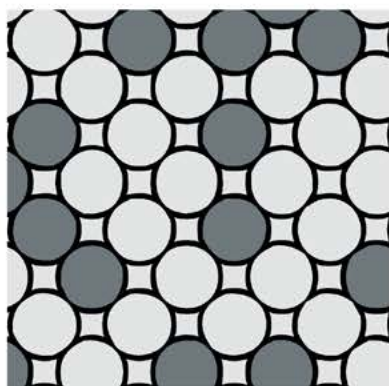
**DENVER (3)**  
01203



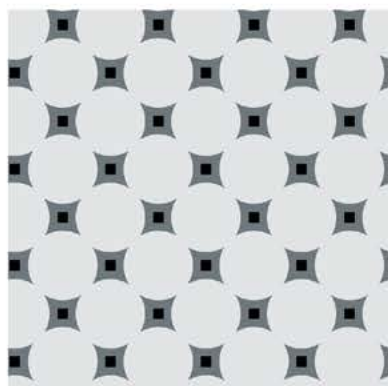
**Palette**  
01204



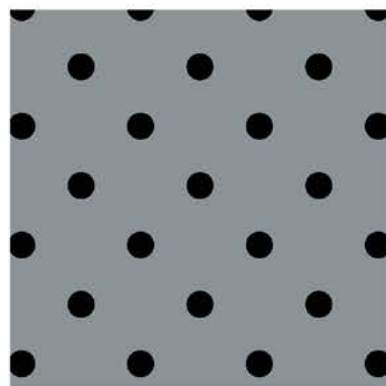
**Big Polka**  
01205



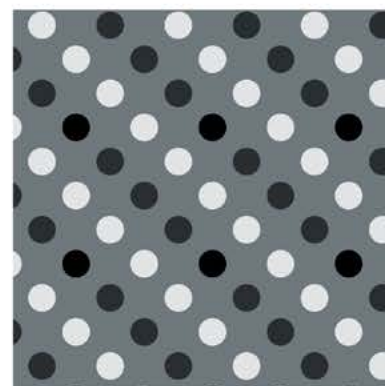
**Syracuse**  
01206



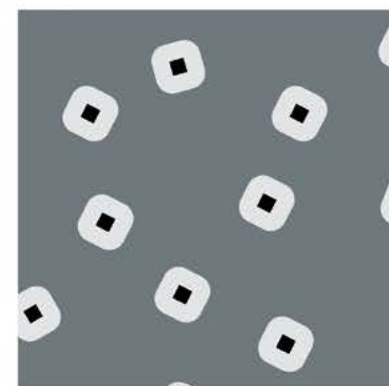
**Ivy League**  
01207



**Franklin**  
01208



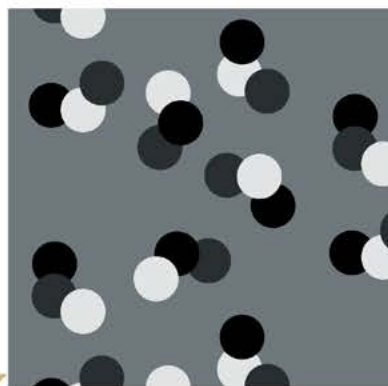
**Ithica**  
01209



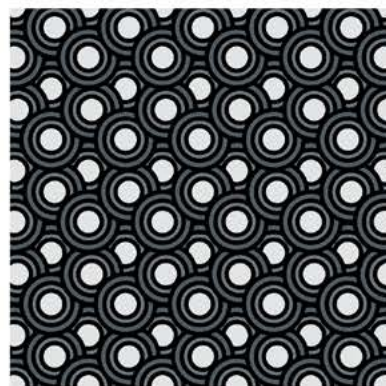
**Jimmies**  
01210



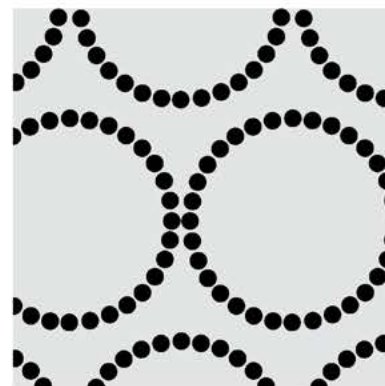
**Aurora**  
01211



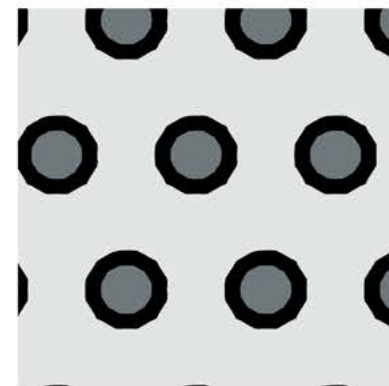
**Elizabeth**  
01212



**Circles**  
01213

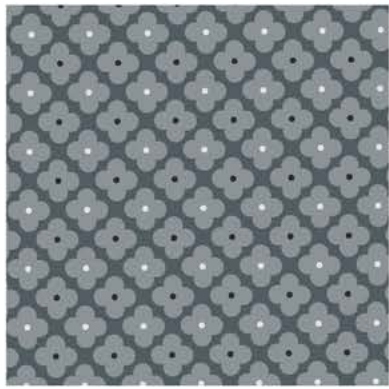


**Humboldt**  
01214



**York**  
01215





Piqueña  
07101



Dayton  
07102



Rivière  
07103



Micro  
07104



Hawaiian  
07105



Blossom Heritage  
07106



Lemon Blossom  
07107



Mod  
07108



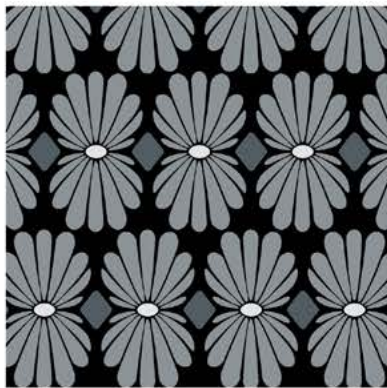
Backyard  
07109



Gatsby  
07110



Rural  
07111



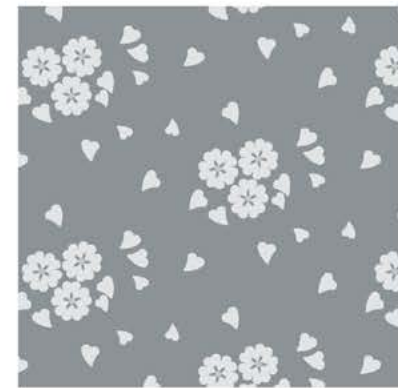
Nouveau  
07112



Dig It  
07113



Bouquet  
07114



Cherry Blossom  
07115





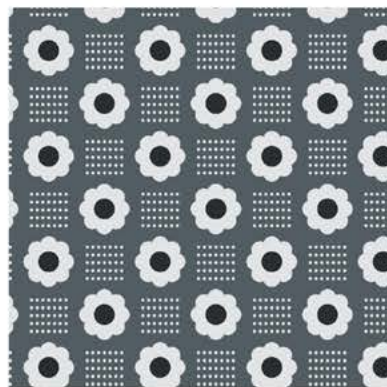
Francis  
07116



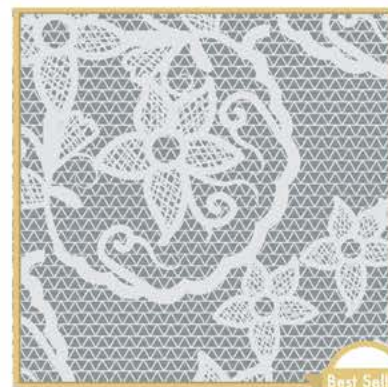
Roses  
07117



Pinwheel  
07118



Vintage Daisy  
07120

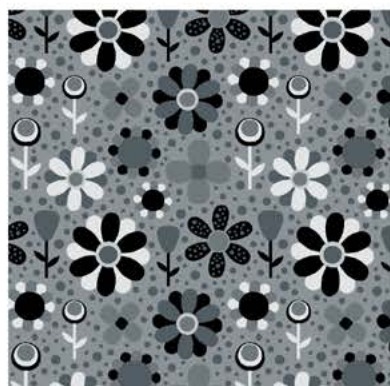


Threadwork  
07121

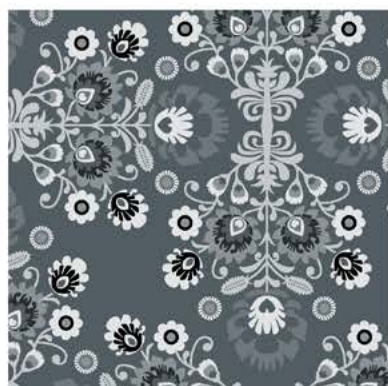
Best Seller



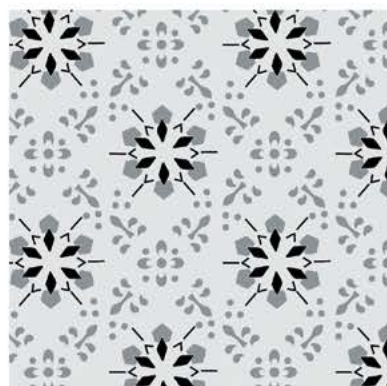
Floating  
07122



Bloom  
07123



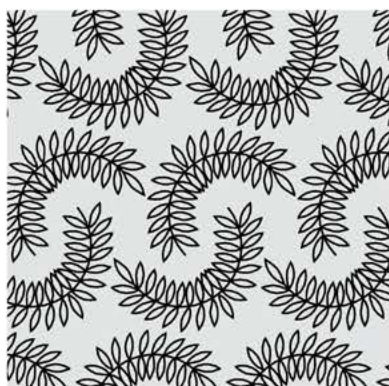
Storytime  
07124



Deco Floral  
07125



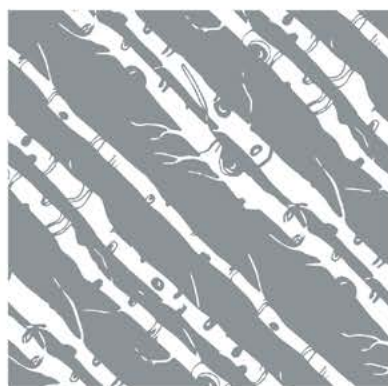
Pinecones  
07126



Curly Vines  
07127



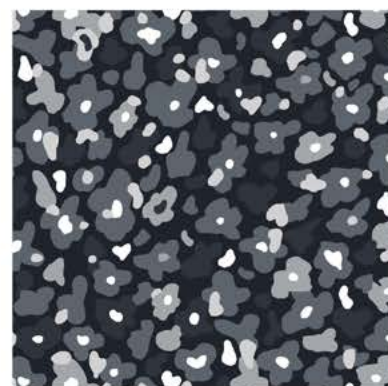
Botanical Tile  
07128



Aspen Grove  
07129



Coleus  
07130



Camo Floral  
07133





**Dizzy Daisies**  
07134



**Dreamy Floral**  
07135



**Field Floral**  
07136



**Freesia**  
07137



**Hidden Floral**  
07138



**Inflorescence**  
07139



**Mariposa**  
07140



**Rose Bud**  
07141



**07142 Scribble Blossom**  
07142



**Spring Garden**  
07143



**The Lyn**  
07144



**Whitman**  
07145



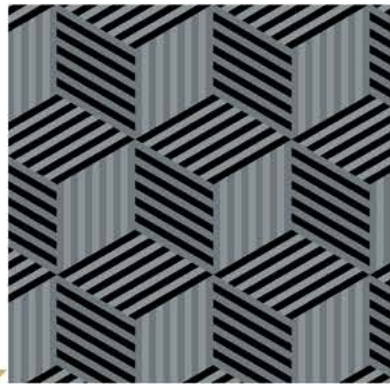
**Lemon Blossom**  
07107



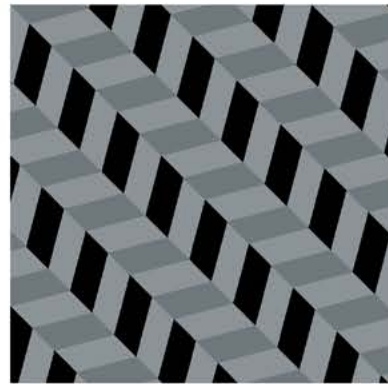


Herringbone  
02501

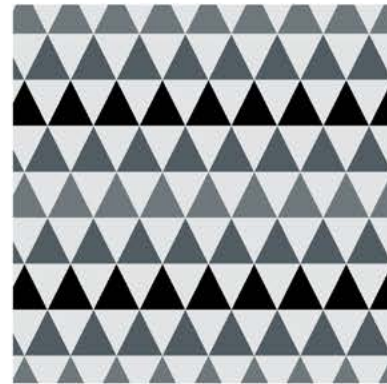
Best Seller



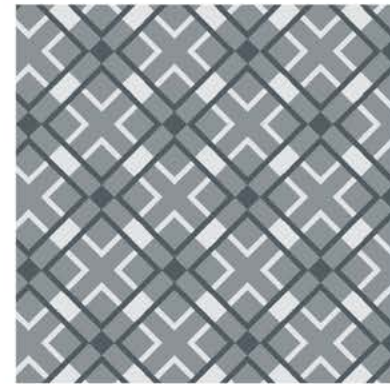
Hexagon Wild  
02502



Steps  
02503



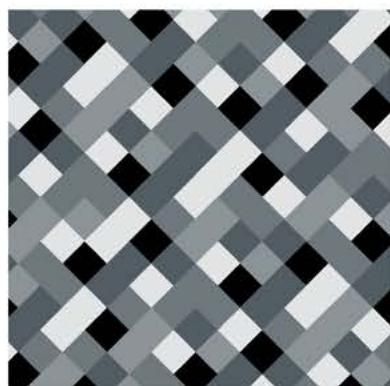
Bjorn  
02504



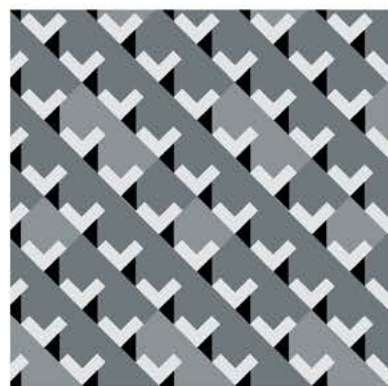
The Grid  
02505



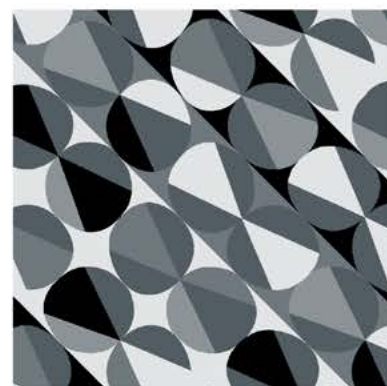
Chevron  
02506



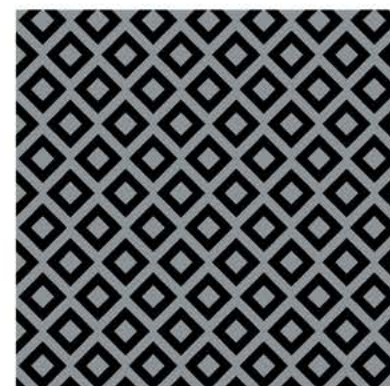
Blur  
02507



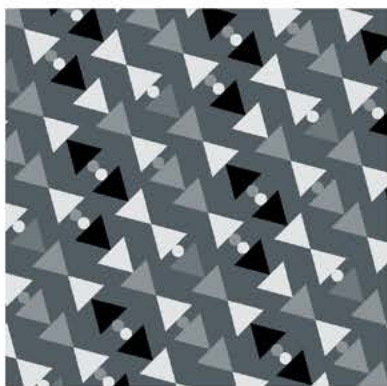
Maze  
02508



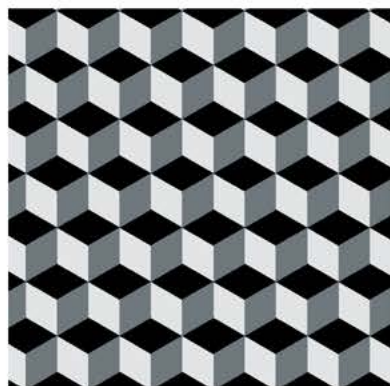
Shimmer  
02509



Clancy  
02510



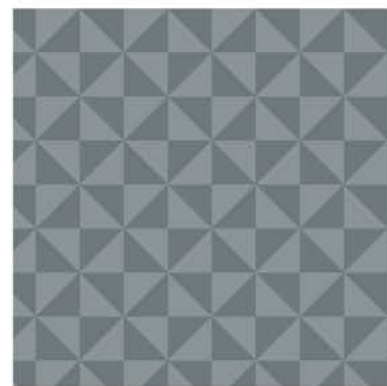
Lauf  
02511



Escher  
02512



Dante  
02513

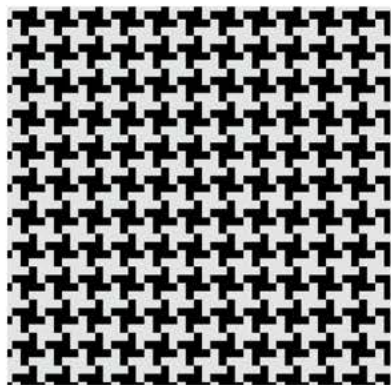


Trokut  
02514



Basil  
02515

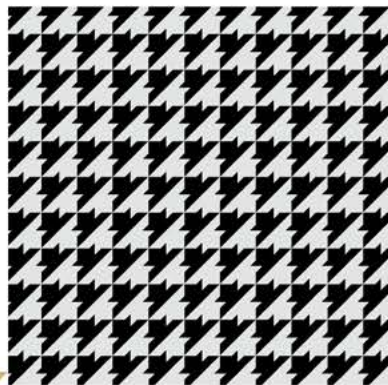




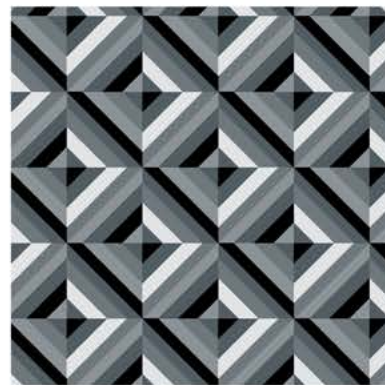
Puppytooth  
02516



Houndstooth  
02517



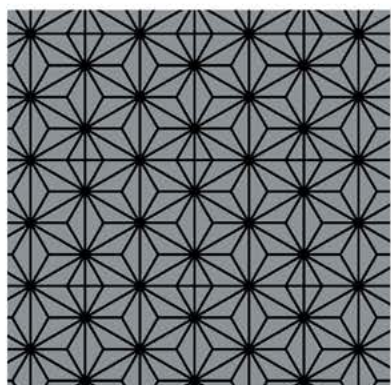
Foxtooth  
02518



Brick  
02519



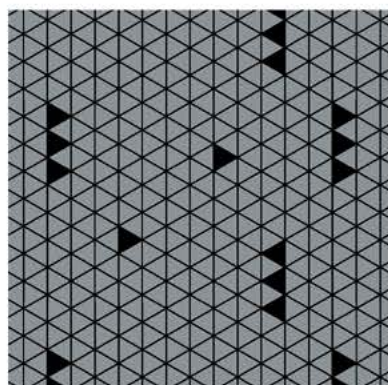
Basketweave  
02520



Link  
02521



Takeoff  
02522



Bucky  
02523



Calico  
02524



Clouds  
02525



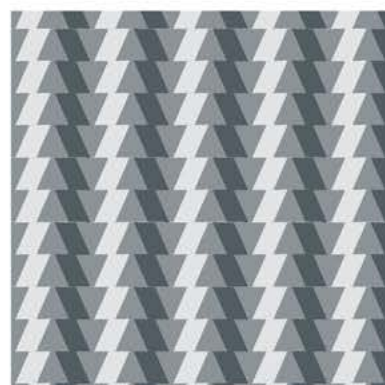
Deco Curves  
02526



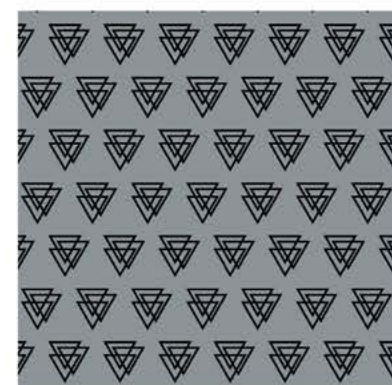
Deco Mites  
02527



Quake  
02528

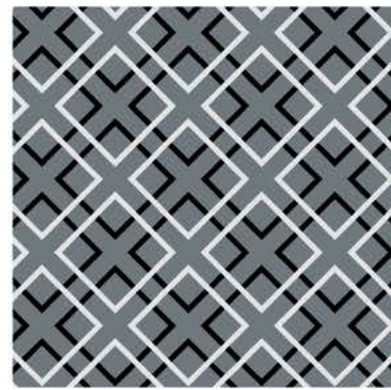


Disruption  
02529



Mod Triangles  
02530

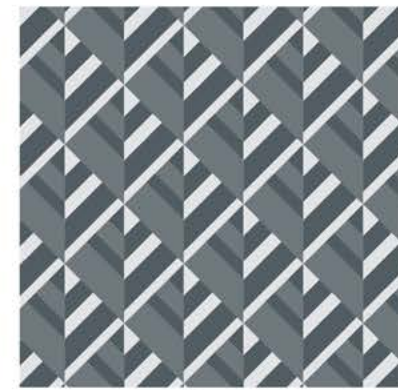




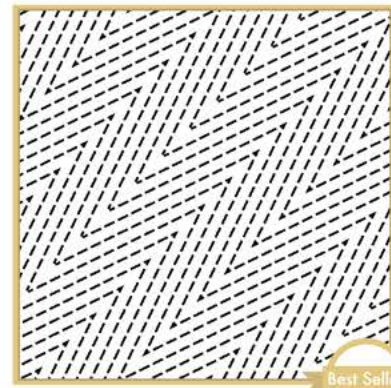
Mesa  
02531



Fanfare  
02532



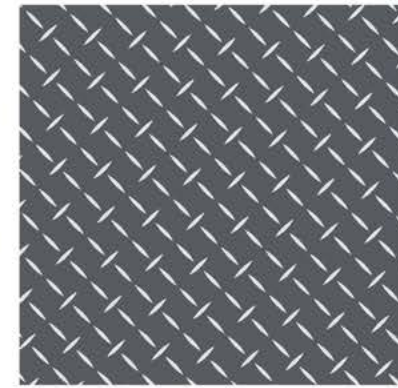
Plates  
02533



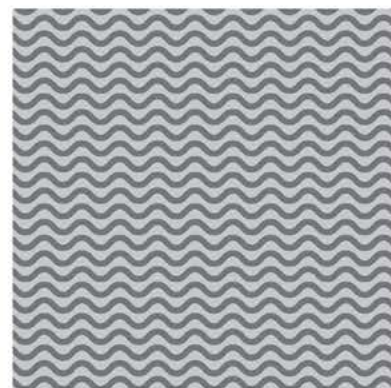
Arrowwood  
02534



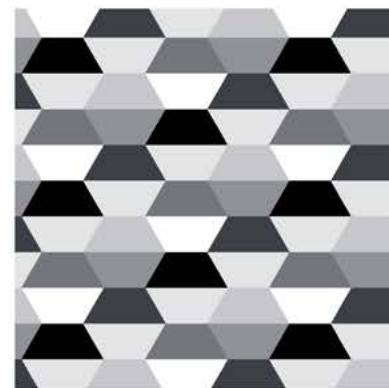
Brickwork  
02535



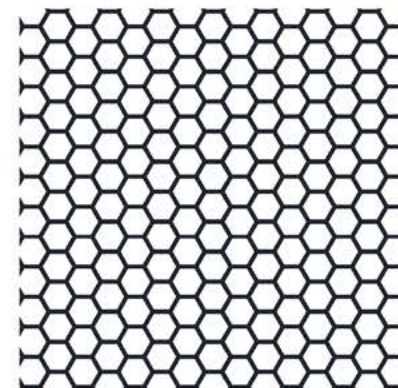
Crisscross  
02536



Current  
02537



Deco Hex  
02538



Hive  
02539

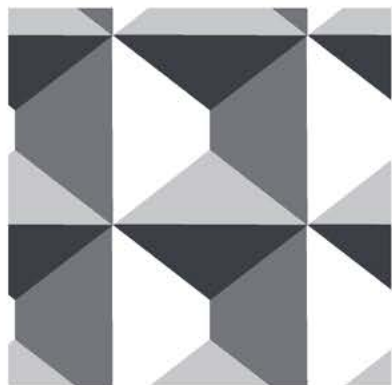


Tatami  
02546

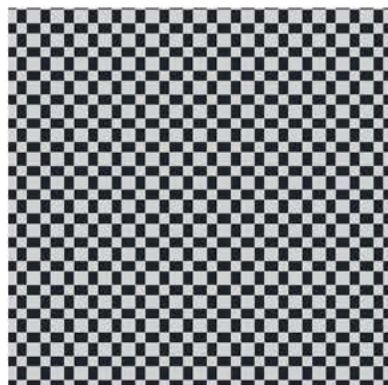




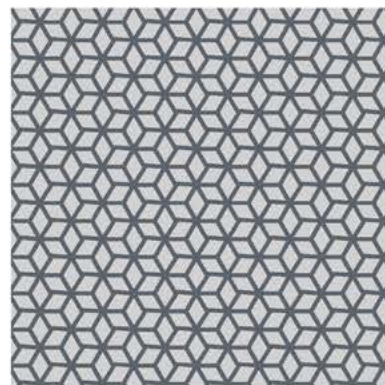
Triad  
02540



Illusion  
02541



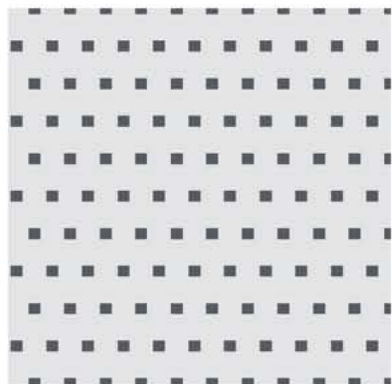
Norman  
02542



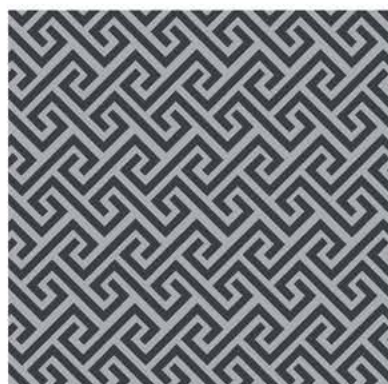
Preston  
02543



Simon  
02544



Stitch  
02545



Tatami  
02546

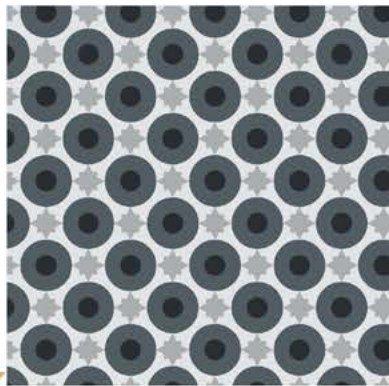


Tortoiseshell  
02547

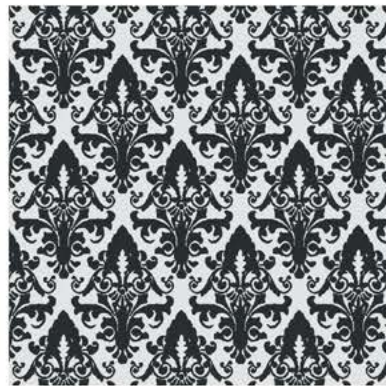




**Mosaic**  
03301



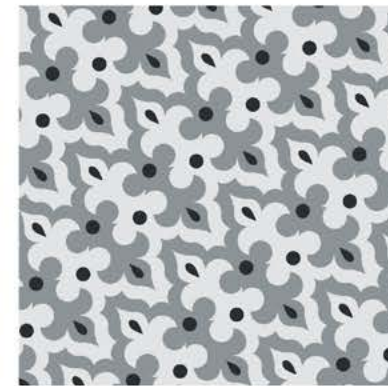
**Micro Tiles**  
03302



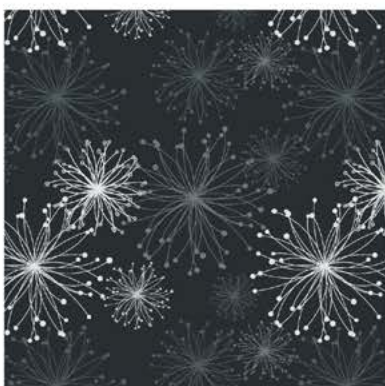
**Regis**  
03303



**Mansfield**  
03304



**Englewood**  
03306



**Tara**  
03307



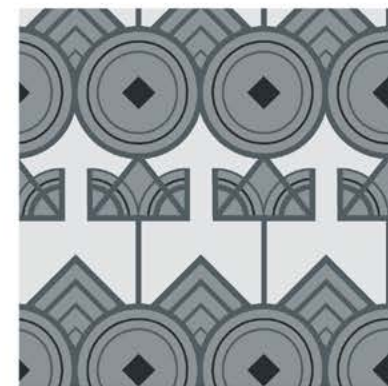
**Haine**  
03308



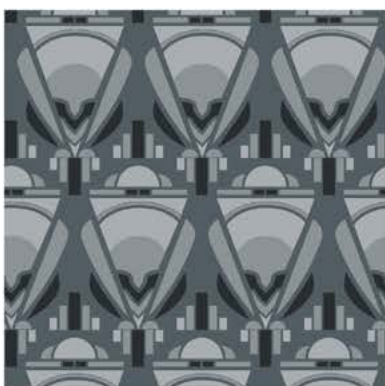
**Flutter**  
03309



**Constellation**  
03310



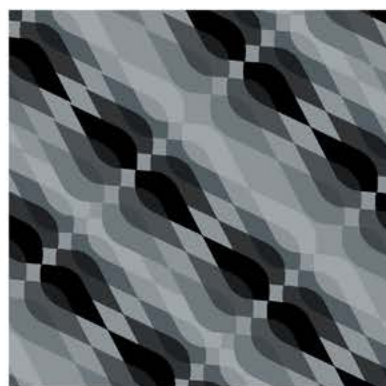
**Charleston**  
03311



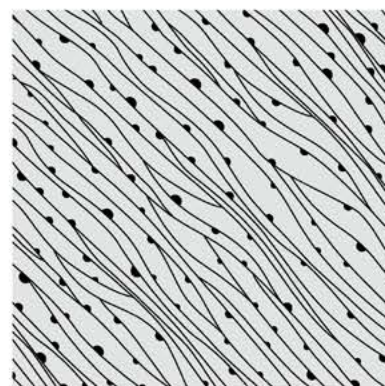
**Showstopper**  
03312



**Vonnie**  
03313



**Jade**  
03314

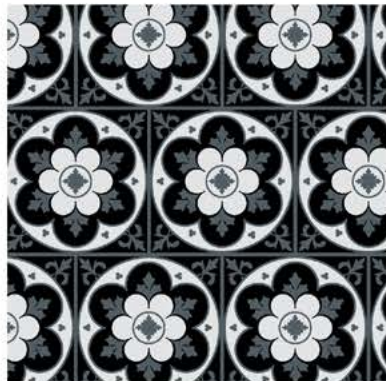


**Reef**  
03315



**Guided Medallion**  
03316





Iron Blossom  
03317



Hamling  
03318





Dew  
04609



Fantastic  
04601



Bandana  
04602



Decadence  
04603



Murphy  
04604



Carleton  
04605



Sebastian  
04606



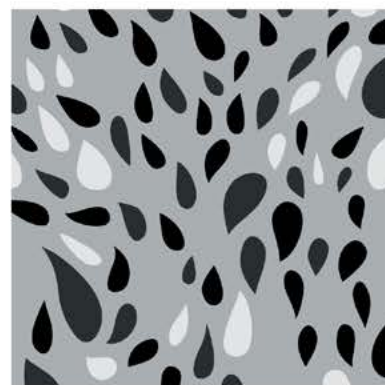
Decadence  
04603



Petal  
04607



Goldie  
04608



Dew  
04609

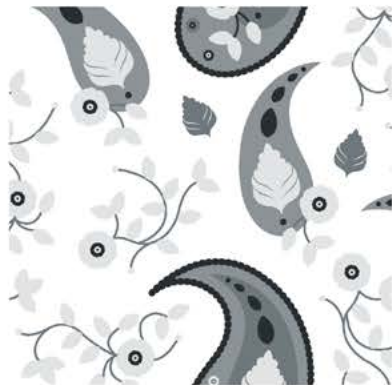


Stellar  
04610





Anise  
04611



Lauren  
04612



Prestige  
04613



Hoya  
04614



Alameda  
04615



Chloe  
04616

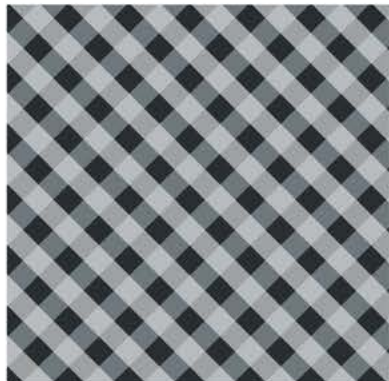


Rustica  
04617





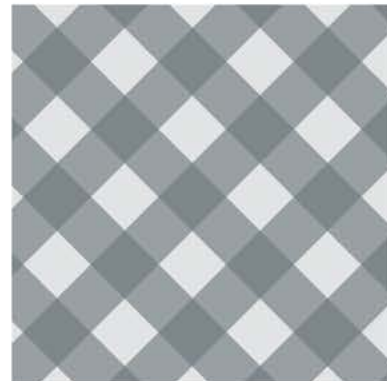
Louisiana  
05801



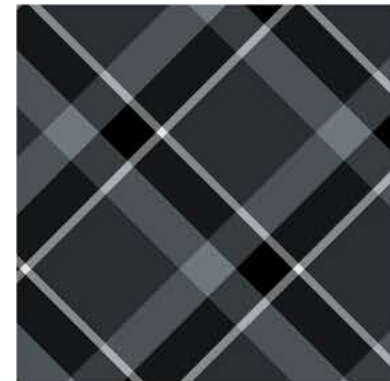
Maly  
05802



Windowpane  
05803



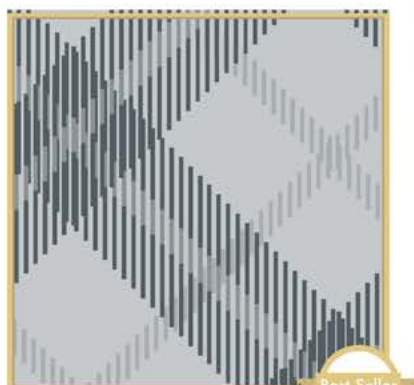
Gingham  
05804



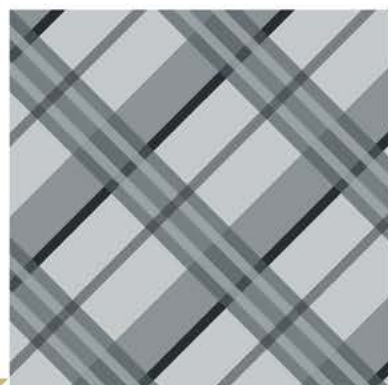
Inca  
05805



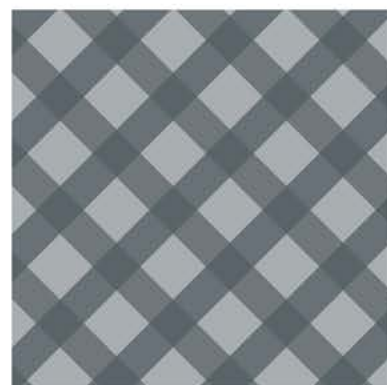
Baker  
05806



Shaun  
05807



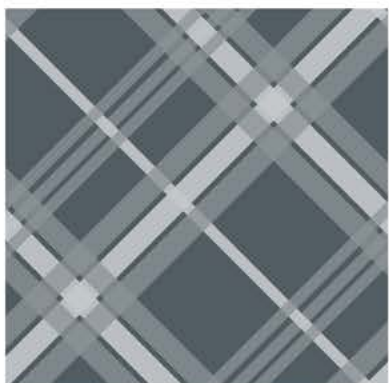
Patrick  
05808



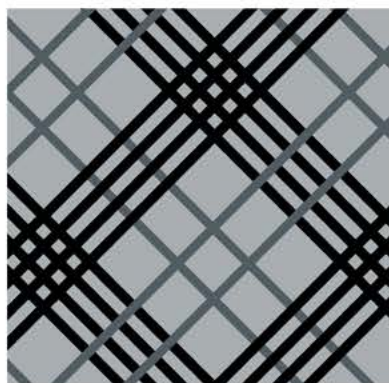
Pickett  
05809



Savannah  
05810



Jackson  
05811



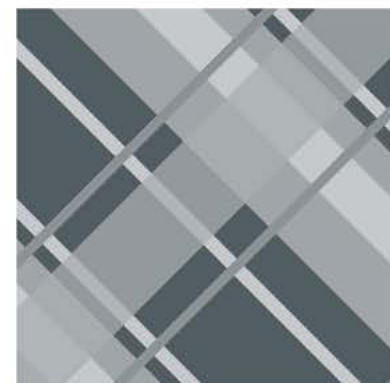
Manhattan  
05812



Crawford  
05813

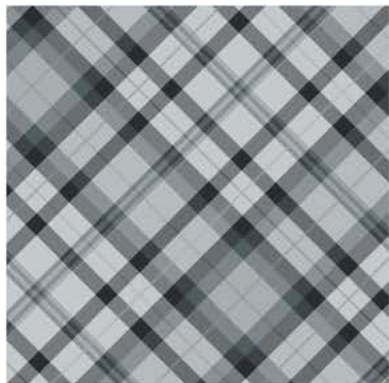


Castlewood  
05814



Regal  
05815

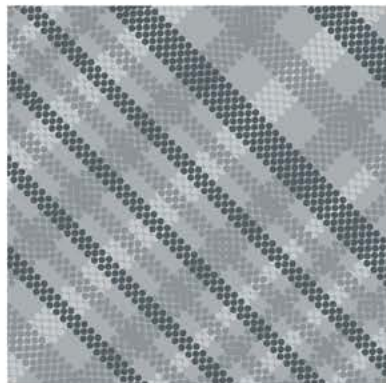




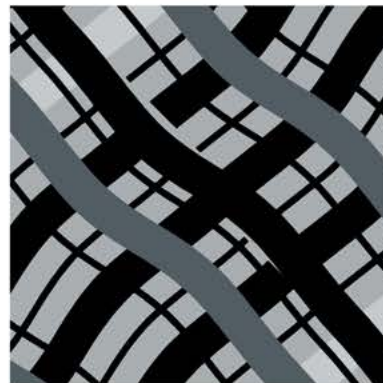
**O' Malley**  
05816



**Mortimer**  
05817



**Potter**  
05818



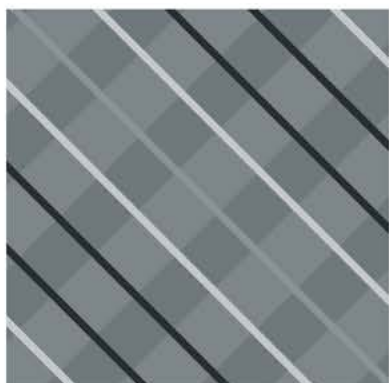
**Moller**  
05819



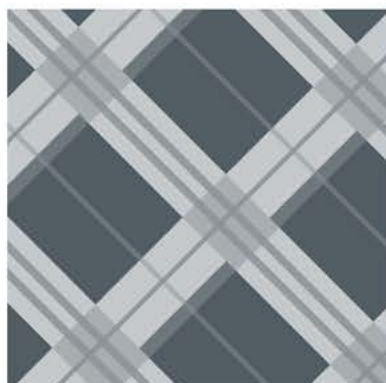
**Hartman**  
05820



**Finestra**  
05821



**Hillside**  
05822



**Winston**  
05823



**Salisbury**  
05824



**Luther**  
05825



**Vegas**  
05826



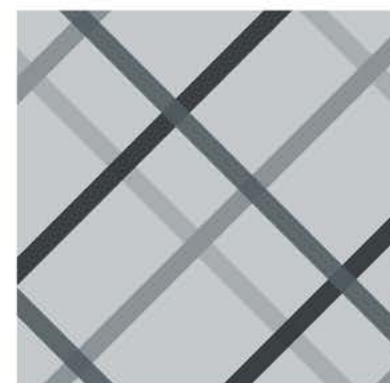
**Baskerville**  
05827



**Downing**  
05828

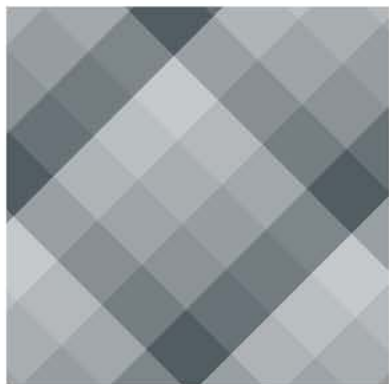


**Lanai**  
05829

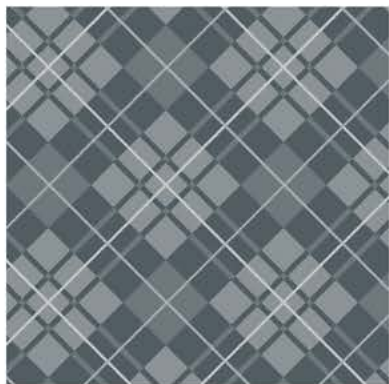


**Caroline**  
05830





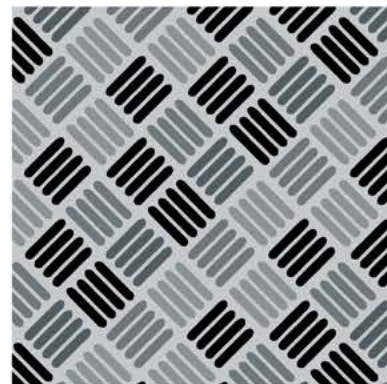
Squared Away  
05831



Tartan  
05832



Waffle  
05833



Crosshatch  
05834



Chainlink  
05835



Cincy  
05836



Quilted  
05837



Argyle  
05838



American  
05839



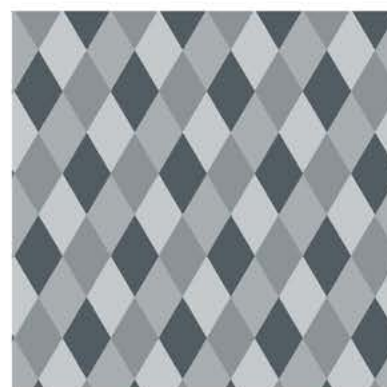
Gone Plaid  
05840



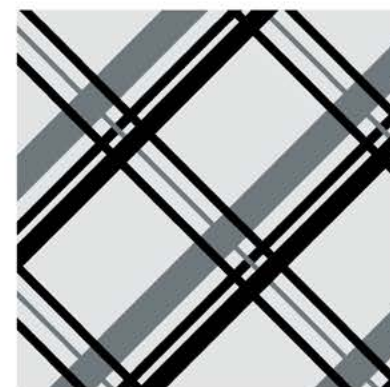
Winston  
05823



Intersector  
05841

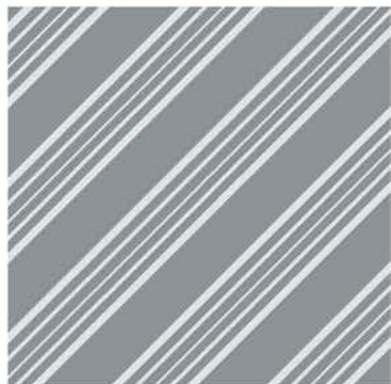


Diamond  
05842



Raymond  
05843





Archer  
06001



Broadway  
06002



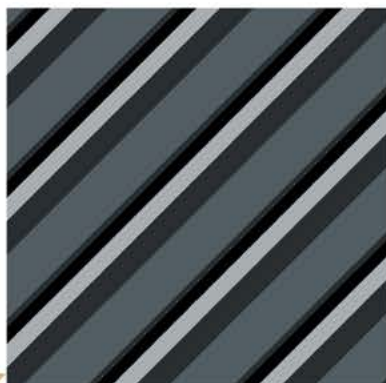
Clarkson  
06003



Lincoln  
06004



Winthorpe  
06005



Clarke  
06006



Rugby  
06007



Brooklyn  
06008



Salem  
06009



Winthorpe  
06005

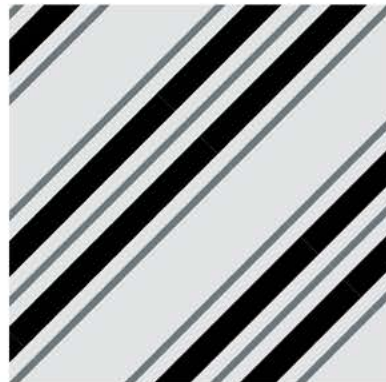




**Kalamath**  
06010



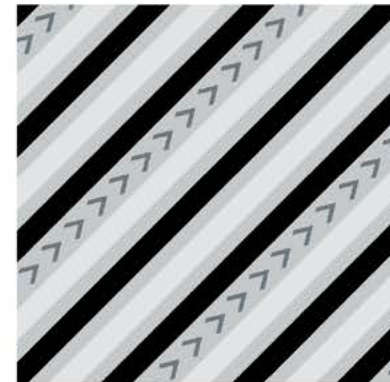
**Ogden**  
06011



**Colfax**  
06012



**Butler**  
06013



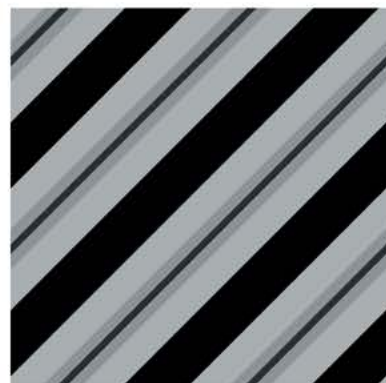
**Spring**  
06014



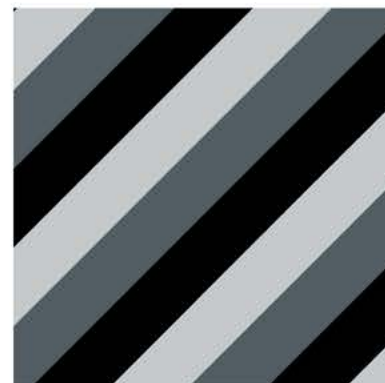
**Lyle**  
06015



**Kent**  
06016



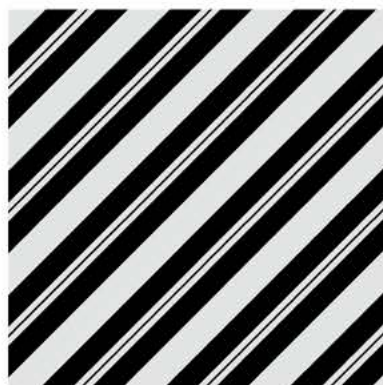
**Bruce**  
06017



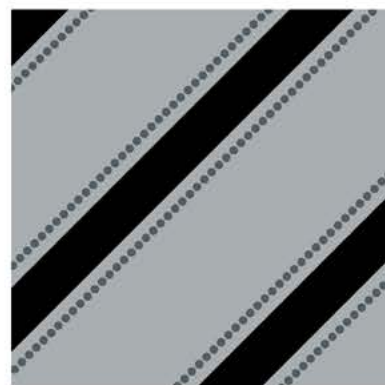
**Columbine**  
06018



**Federal**  
06019



**Collegiate**  
06020



**Fox**  
06030

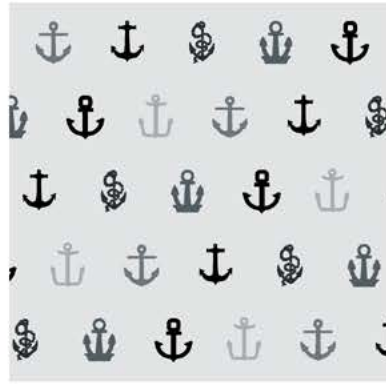




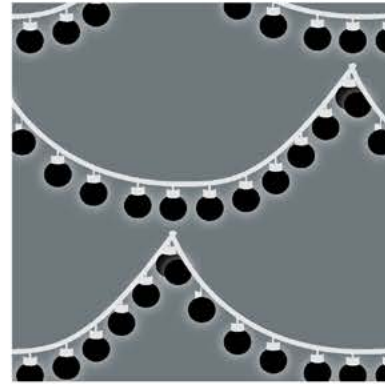
**Bikes**  
08001



**Azteca**  
08004



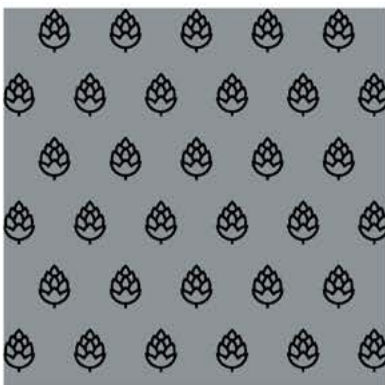
**Anchors Away**  
08005



**Garden Lights**  
08007



**Lace Affairs**  
08008



**Hops**  
08010



**Arrow'd**  
08011



**Knotical**  
08012



**Sugar Skulls**  
08013



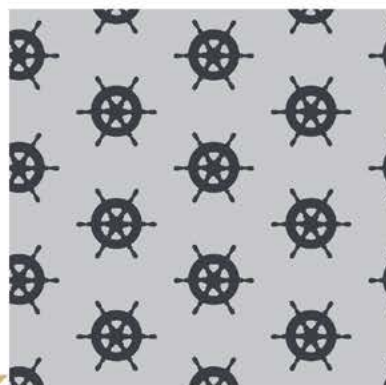
**Happy Camper**  
08014



**Fix-It**  
08015



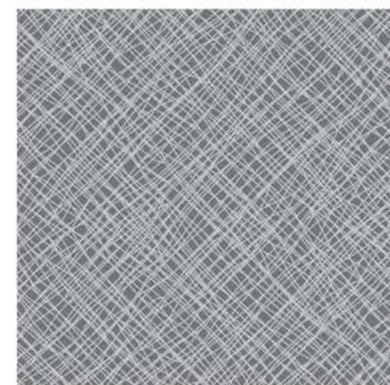
**Cacti**  
08016



**Captain's Wheel**  
08017



**Coral Reef**  
08018

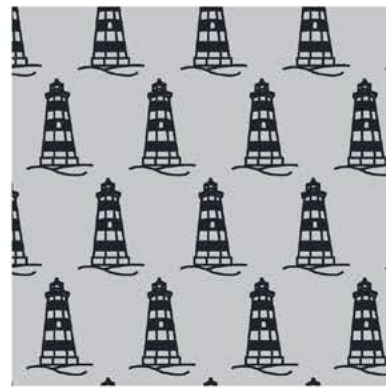


**Burlap**  
08019

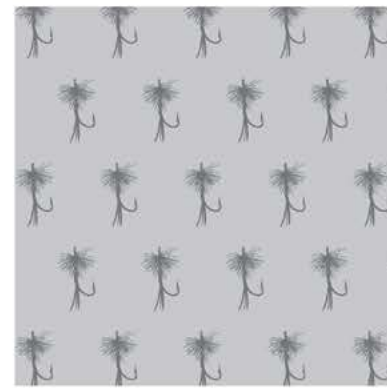




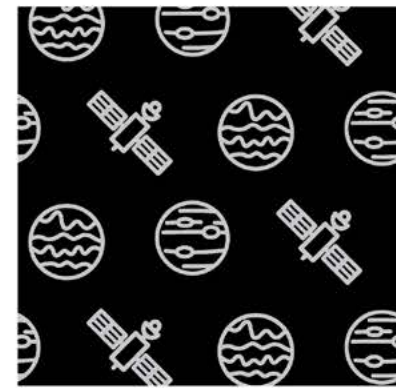
**Cacti**  
08016



**Lighthouse**  
08020



**Lure**  
08021



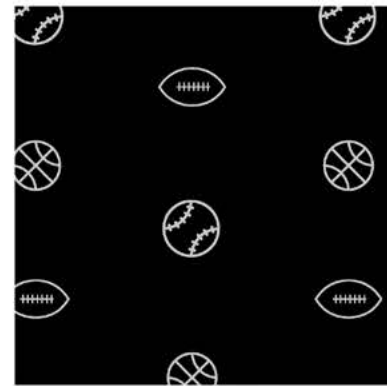
**Orbit**  
08023



**Wheat**  
08024



**Yuletide**  
08025



**Sportsball**  
08026





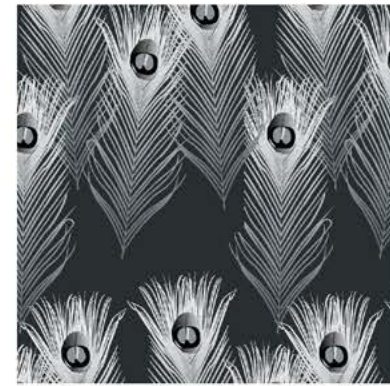
Whales  
10018



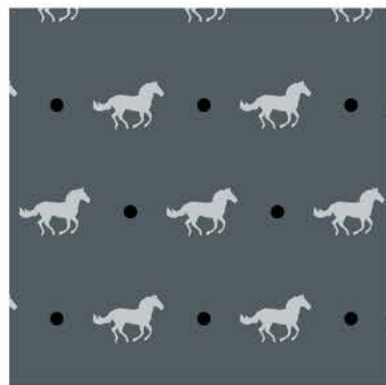
Dinos  
10001



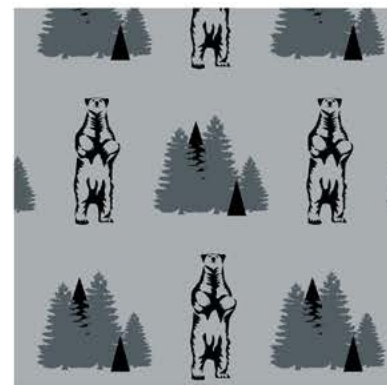
Free Bird  
10002



Peacock Feathers  
10003



Derby  
10004



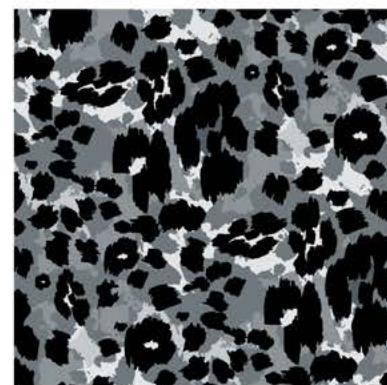
Bear in the Woods  
10005



Below the Sea  
10006



Buck  
10007

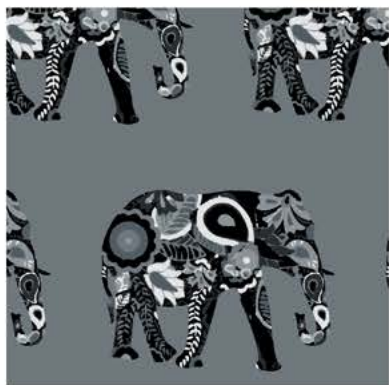


Cheetah  
10008



Crabby  
10009





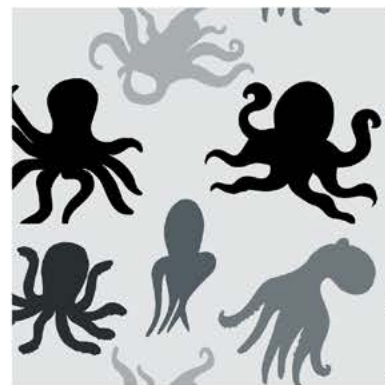
Floral Elephants  
10010



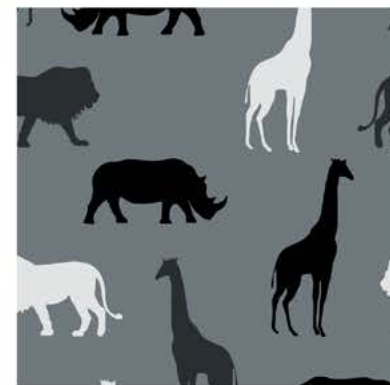
Fly Fishing  
10011



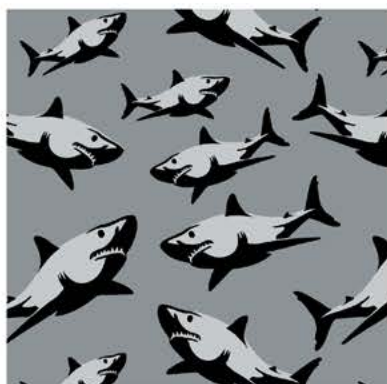
Kitty Cats  
10012



Octopus  
10013



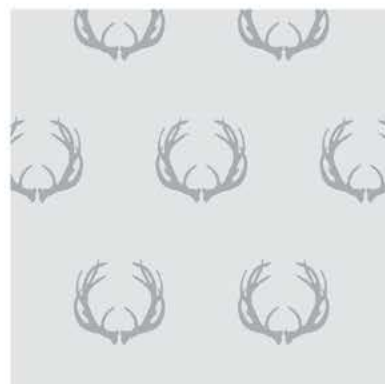
Sarafi  
10014



Sharks  
10015



Starfish  
10016



Trophy  
10017



Whales  
10018